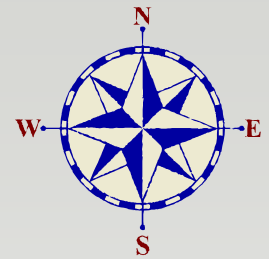
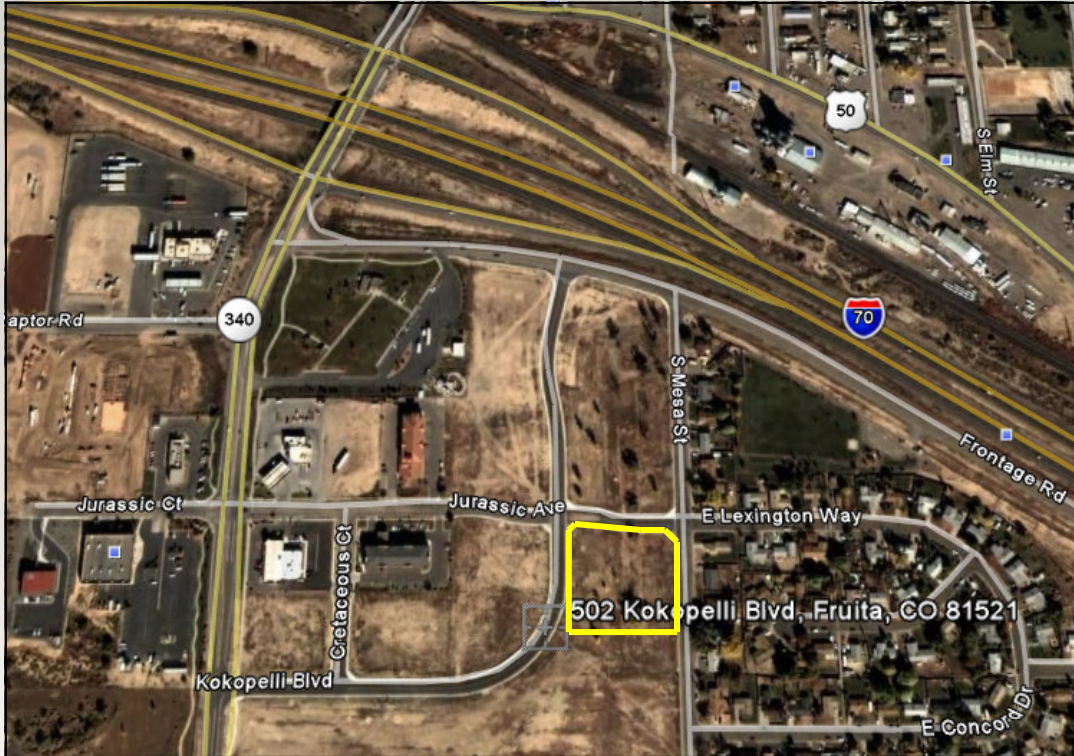


1.47 AC - Retail Lot

502 Kokopelli Blvd., Fruita, CO 81521

For Sale



- 1.47 Acres - Building Lot
- Kokopelli Commercial Park
 - Zoned TC (Tourist Commercial)
- Just off Interstate 70, Exit 19
 - Good Visibility
- Great Spot for Multi-Tenant Retail
 - For Sale \$595,000



Contact Information :

Dale Beede
dbeede@cbcworldwide.com
Phone : (970) 244-6615

All information herein is from sources deemed reliable, however, broker makes no warranties, express or implied as to the accuracy of the information or to the suitability of this property for the investor.



PRIME PROPERTIES, LLC

www.grandjunctioncommercial.com

www.CBCWorldwide.com

550 Patterson Rd., Suite B,
Grand Junction, CO 81506
(970) 243-7375