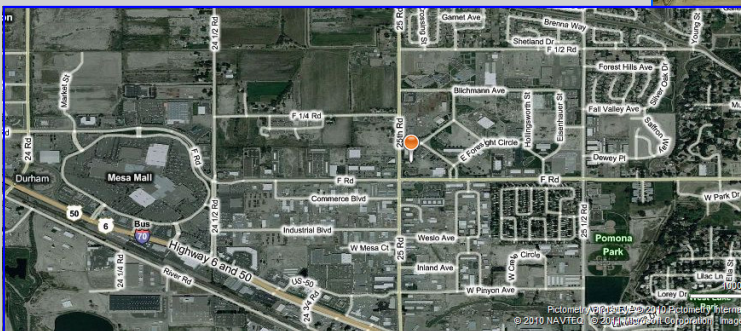


# North City Professional Offices

610 - 25 Road, Grand Junction, CO 81505

For Lease



- 5,991 SF 1992 Masonry Built
- Excellent Location
- Paved Off-Street Front & Rear Prkg
- Nicely Finished Throughout
- \$4,750/MO NNN

## Contact Information :

Dale Beede, CCIM  
dbeede@cbcworldwide.com  
Phone : (970) 244-6615

All information herein is from sources deemed reliable, however, broker makes no warranties, express or implied as to the accuracy of the information or to the suitability of this property for the investor.



PRIME PROPERTIES, LLC

[www.CBCWorldwide.com](http://www.CBCWorldwide.com)

[www.grandjunctioncommercial.com](http://www.grandjunctioncommercial.com)

550 Patterson Road, Suite B  
Grand Junction, CO 81506  
(970) 243-7375

Coldwell Banker Commercial and the Coldwell Banker Commercial Logo are registered service marks licensed to Coldwell Banker Commercial Affiliates. Each Office is Independently Owned and Operated.